

VIRGINIA COMMUNITY HEALTHCARE ASSOCIATION

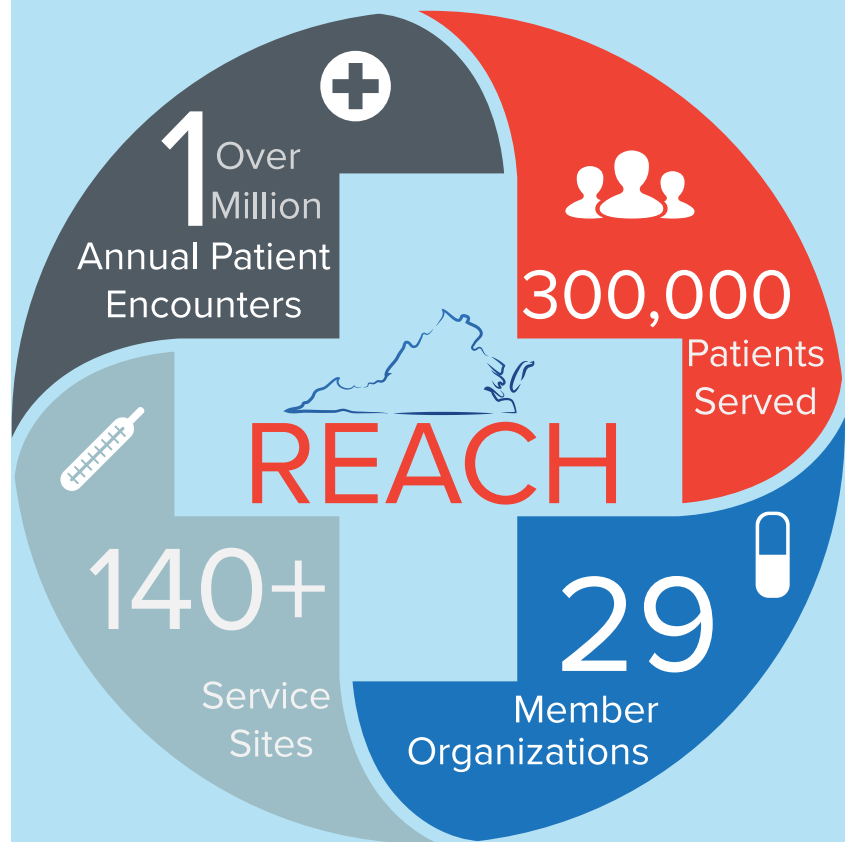
QUICK FACTS

WE ARE VIRGINIA'S PRIMARY CARE ASSOCIATION

- A Community Health Center (CHC) is a nonprofit organization usually located in a Medically Underserved Area/Population (MUA/P). MUA/Ps include both urban and rural locations.
- CHCs provide primary healthcare to anyone seeking care, regardless of their ability to pay and whether patients are insured, under-insured, or insured.
- Our members include non-profit community-based providers of primary care, rural health clinics, and migrant health center sites.



3831 Westerre Parkway, Suite 2
Henrico, VA 23233
804-237-7677 | Info@VaCommunityHealth.org



The Virginia Community Healthcare Association is a nonprofit statewide association representing more than 140 community health center (CHC) sites, migrant health centers, Healthcare for the Homeless programs, and similar organizations throughout the Commonwealth of Virginia.

For more than 30 years, our organization has provided training and technical assistance services for our members including clinical and staff development, recruitment and retention services, board and executive development, and financial training.

The Association also provides recruiting and retention of healthcare practitioners (physicians, nurse practitioners and physician assistants) for its member organizations. Additionally, the Association serves as the Health Center Controlled Network, providing training and technical assistance to CHCs on the adoption and implementation of Electronic Health Records and Meaningful Use.

VIRGINIA'S HEALTH CENTERS BY THE NUMBERS

Association Members

29 Nonprofit Community Corporations operating over

- Community Health Centers
- Migrant Health Centers
- Rural Health Centers
- Healthcare for the Homeless Programs
- Black Lung Respiratory Care

140

Service Sites

+ We help care for Virginians

Services Provided:

- Primary Care
- Dental Care
- Behavioral Health
- Pharmacy Services

+ **820,446**

medical encounters

177 Physicians

163 Nurse Practitioners

& Physician Assistants

11 OB/Gyn Physicians

& Certified Midwives

101 Dentists

& Dental Hygienists

88 Ancillary Dental Staff

7 Psychiatrists

48 Ancillary Mental Health

Providers & Staff

184 Allied Health

Professionals



over
1 million
total encounters



Staffing and
Service Statistics

+ Our Members
Serve More Than

100

Virginia Counties,
Cities and Towns

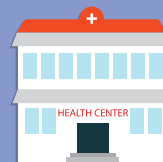


+ Economic Impact

\$172.9

million

total combined
operating revenues



\$180

million

total economic
output

\$95 million imported dollars: outside resources brought into Virginia communities through federal & private grant dollars

+ Patient Mix

77,419

privately insured

98,597

uninsured

122,084

publicly insured
(Medicaid / Medicare)

+ Sliding Fee
Scale Adjustments

\$47.5

million



+ Quality Jobs

2,500

full & part-time jobs

generated as a result
of the economic impact
of our Members

THE VIRGINIANS WE SERVE

UNIFORM DATA SYSTEM (UDS)

Each year, health centers report on performance using the measures defined in the Uniform Data System (UDS).

UDS is a core set of information pertaining to the evaluation of health centers based on overall operation and performance. The data are collected annually to ensure compliance with legislative and regulatory requirements, improve health center performance and operations, and to report overall program accomplishments.

UDS data help to identify trends over time, enabling the creation or expansion of targeted programs, as well as implementation of innovative and effective services to improve the health of underserved communities and vulnerable populations.



3831 Westerre Parkway, Suite 2
Henrico, VA 23233
804-237-7677
Info@VaCommunityHealth.org

Patients by Race

	Number	Percent of Total
Asian	4,134	
Native Hawaiian	166	
Other Pacific Islander	1,177	
Total Asian/Hawaiian/Pacific Islander	5,477	1.8%
Black/African American (including Blacks or African Americans of Latino/Hispanic descent)	94,391	31.7%
American Indian Alaska Native	600	0.2%
White	168,599	56.6%
More than one race	3,739	1.3%
Unreported/Refused to report	24,959	8.4%
Total Patients	297,765	100.0%

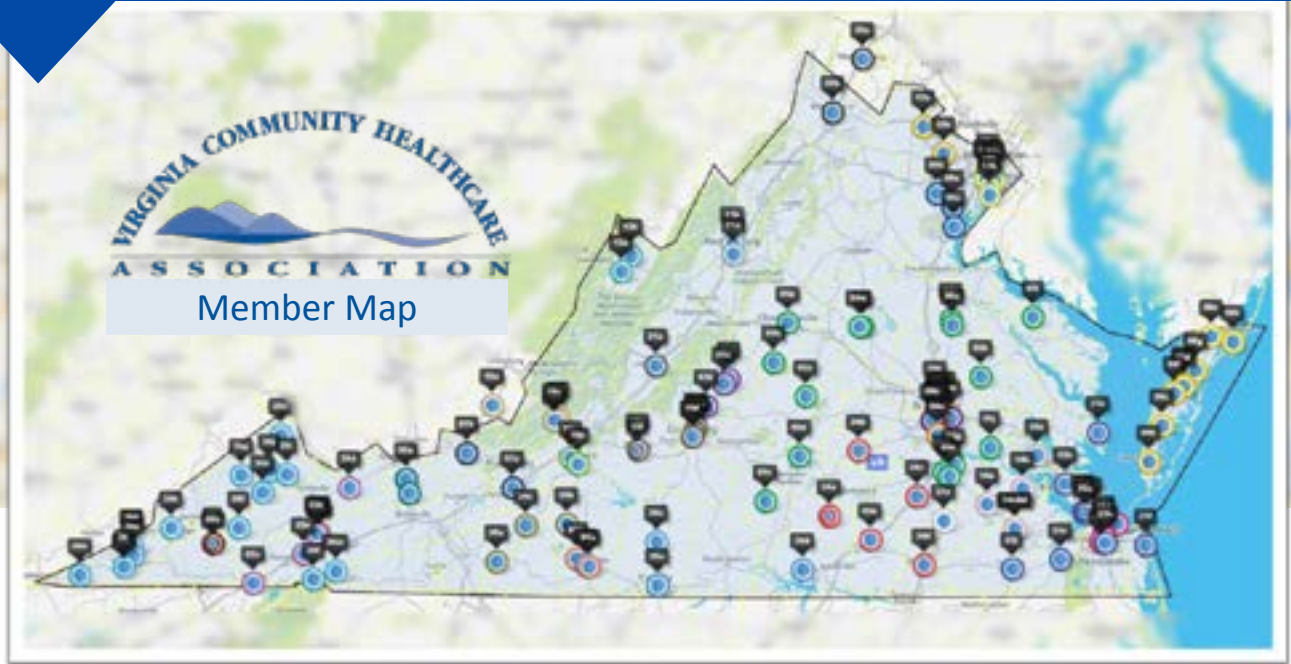
Patient Income as Percent of Poverty Level

	Number of Patients (a)	Unknown Allocated	As % of Allocated
100% and Below	94,744	78,778	58.3%
101-150%	28,815	23,960	17.7%
151-200%	14,471	12,033	8.9%
Over 200%	24,551	20,414	15.1%
Unknown	135,184	0	0%
Total	297,765	135,185	100%

Principal Third Party Insurance Source

	Ages 0-19 (a)	Ages 20+ (b)	Total	As % of Total
None/Uninsured	11,135	87,461	98,596	33.1%
Regular Medicaid	39,342	28,545	67,887	
CHIP Medicaid	6,082	1,250	7,332	
Total Medicaid	45,424	29,795	75,219	25.3%
Medicare	16	47,168	47,184	15.8%
Other Public Insurance	0	0	0	0.0%
Private Insurance	14,329	62,437	76,766	25.8%
Total	70,904	226,861	297,765	100.0%

OUR MEMBER HEALTH CENTER ORGANIZATIONS



- | | |
|--|---|
| 1. Bassett Family Health-Martinsville Henry County Coalition for Health and Wellness | 16. Monroe Health Center |
| 2. Bland County Medical Center | 17. Neighborhood Health |
| 3. Blue Ridge Medical Center | 18. New Horizons Healthcare |
| 4. Capital Area Health Network (CAHN) | 19. Olde Towne Medical & Dental Center |
| 5. Central Virginia Health Services (CVHS) | 20. Piedmont Access to Health Services (PATHS) |
| 6. Clinch River Health Services | 21. Rockbridge Area Health Center |
| 7. Community Health Center of the New River Valley | 22. Shenandoah Valley Medical System (SVMS) |
| 8. Eastern Shore Rural Health System | 23. Southeastern Virginia Health Systems (SEVHS) |
| 9. Greater Prince William Community Health Center | 24. Southern Dominion Health System |
| 10. Hampton Roads Community Health Center | 25. Southwest Virginia Community Health Systems (SVCHS) |
| 11. Harrisonburg Community Health Center | 26. Stone Mountain Health Services |
| 12. HealthWorks for Northern Virginia | 27. Stony Creek Community Health Center |
| 13. Highland Medical Center | 28. The Daily Planet |
| 14. Horizon Health Services | 29. Tri Area Community Health Center |
| 15. Johnson Health Center | |